



# WHITSUNDAY SAILING CLUB

## SAIL AIRLIE 2025

**INCORPORATING:**

**WASZP QLD SPRINT & STATE CHAMPIONSHIPS**

**NQ LASER CHAMPIONSHIPS**

**OTB CLASSES REGATTA**

**JUNIOR CLASSES (SABOT, OPTIMIST, O'PEN SKIFF)**

**GREEN FLEET REGATTA**

**18<sup>TH</sup> – 20<sup>TH</sup> APRIL 2025**

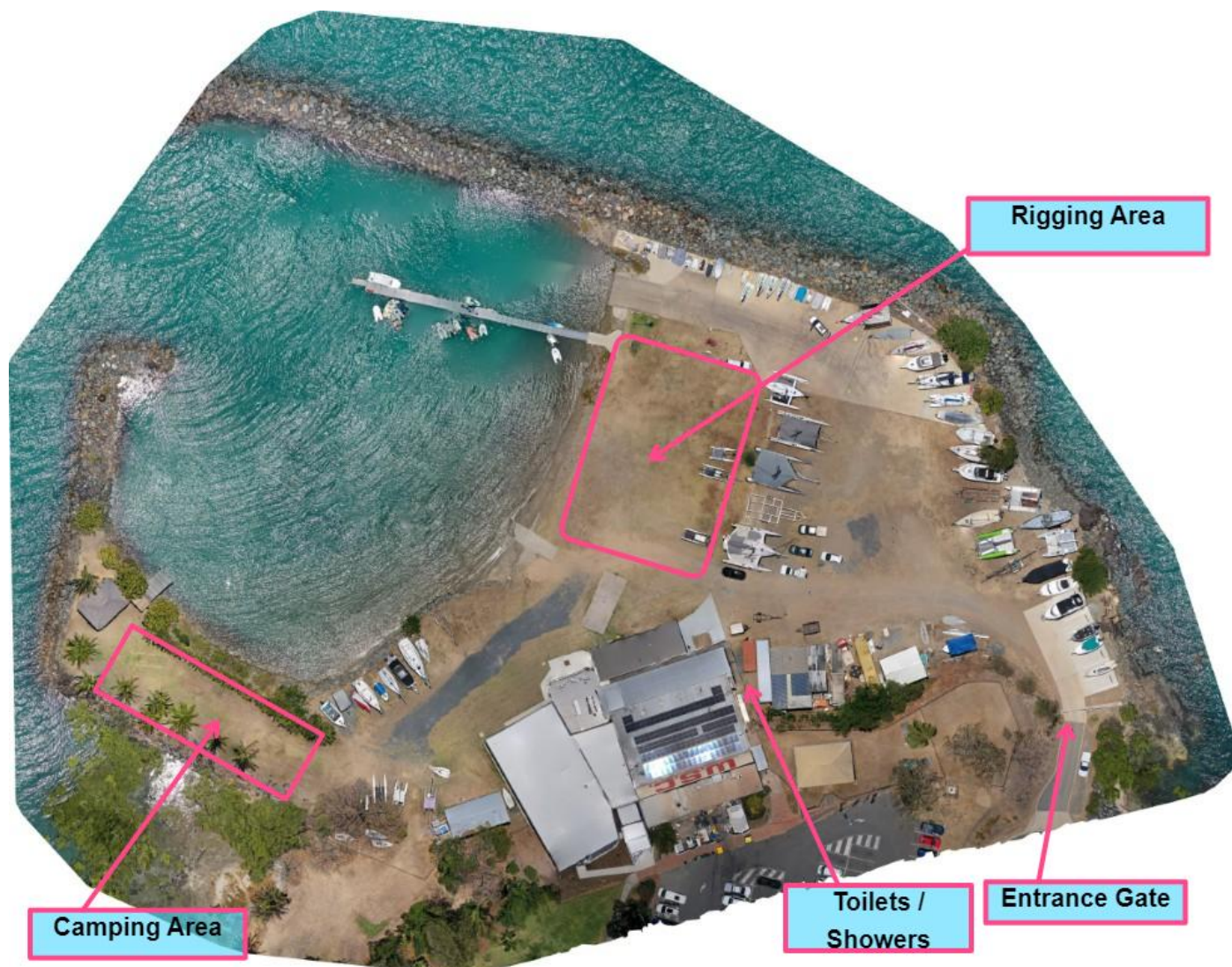
## REGATTA INFORMATION AND SAILING INSTRUCTIONS

**PROUDLY SPONSORED BY:**



## GENERAL INFORMATION

Welcome to Sail Airlie, the 2025 Easter Regatta for Off - Beach sailing dinghies, this year incorporating the WASZP QLD Sprint and State Championships, North Queensland Laser Championships and the Sabot Traveller Series. We hope you enjoy your time with us in the Whitsundays, and discover for yourself the spirit of friendly competition that the regatta has fostered throughout its history.



### Arriving at the Regatta –

The gates will be open during the day on Thursday and Friday, allowing competitors to bring their boats and road trailers into the club grounds. Note that the club is closed on Good Friday, other than for event registration.

Please use the boat drop off zone to un-hitch your boat and trailer and then move the road trailer.

Once you have parked your vehicle, please visit the regatta office to complete registration. Please ensure you have details of insurance and your Australian Sailing Number prior to registration.

### Car Parking

Parking is prohibited in the boat park area. Cars must be moved as soon as boats and equipment are unloaded. Please be aware that Whitsunday Regional Council has installed parking ticket machines in the car park adjacent the club. Car parking regulations may be policed by council officers throughout the regatta period.

## Amenities

Toilets and showers are located on the downstairs level of the main club building and will remain open throughout the weekend for the use of competitors and their families.

## Camping

Camping is available by pre-booking only. Details of camping areas will be provided to those who have booked via our website.

## Catering

Light lunches will be available on the ground level on race days. The Club Bistro will also be open for lunch and dinner.

## Presentation

Trophy presentation is scheduled as soon as possible after racing on Sunday, subject to light winds, protest hearings or the usual computer glitch.

## SAILING INSTRUCTIONS

**Organising Authority:** Whitsunday Sailing Club Ltd  
**Event:** Sail Airlie 2025 Regatta  
**Dates:** 18<sup>th</sup> - 20<sup>th</sup> April 2025

Note: The sailing instructions have been separated into General Instructions common to all fleets (Section A) and 4 x Appendices:

### Appendix A Open Divisions -Specific Instructions

- Mixed Multihull
- Laser
- Mixed Mono
- Wing Foilers

### Appendix B WASZP and Wing Foilers - Specific Instructions

- WASP

### Appendix C Junior Fleet -Specific Instructions

- Sabot
- Optimist
- O'pen Skiff
- etc

### Appendix D Green Fleet - Specific Instructions

## SECTION A – GENERAL INSTRUCTIONS

### 1. RULES

- 1.1. The regatta will be governed by the rules as defined in *The Racing Rules of Sailing*.
- 1.2. For all classes, Australian Sailing (AS) Special Regulations Part 2 (Off the Beach) will apply.
- 1.3. Green fleet will be governed by World Sailing Introductory Rules for Sailing.
- 1.4. Boats cannot change class or division after the start of the first race.

### 2. NOTICES TO COMPETITORS

Notices to competitors will be posted on the official notice board, downstairs below the balcony.

### 3. CHANGES TO SAILING INSTRUCTIONS

Any change to the sailing instructions will be posted before 0900hrs on the day it will take effect, except that any change to the schedule of races will be posted by 1900hrs on the day before it will take effect.

### 4. SIGNALS MADE ASHORE

- 4.1. Signals made ashore will be displayed on the flag mast on the balcony of the clubhouse.
- 4.2. When flag AP is displayed ashore, '1 minute' is replaced with 'not less than 30 minutes' in the race signal AP.

## 5. SCHEDULE OF RACES

### 5.1. Racing schedule

| Courses              | Day               | Description                 | Time                                 |
|----------------------|-------------------|-----------------------------|--------------------------------------|
| Junior & Green Fleet | Friday 18 April   | Registration                | 9:00 – 10:00                         |
| Junior & Green Fleet | Friday 18 April   | Competitor's Briefing       | 10:30                                |
| Junior & Green Fleet | Friday 18 April   | Race Session 1              | Warning Signal no earlier than 13:30 |
| Junior & Green Fleet | Saturday 19 April | Race Session 2              | Warning Signal no earlier than 10:00 |
| Junior & Green Fleet | Saturday 19 April | Race Session 3              | Warning Signal no earlier than 14:00 |
| Junior & Green Fleet | Sunday 20 April   | Race Session 4              | Warning Signal no earlier than 10:00 |
| Junior & Green Fleet | Sunday 20 April   | Race Session 5              | Warning Signal no earlier than 14:00 |
| Junior & Green Fleet | Sunday 20 April   | Presentation 4-5pm          | ASAP after last race                 |
|                      |                   |                             |                                      |
| Senior               | Friday 18 April   | Registration                | 9:00 – 10:00 am                      |
| Senior               | Friday 18 April   | Competitor's Briefing       | 10:30 am                             |
| Senior               | Friday 18 April   | Race Session 1              | Warning Signal no earlier than 13:30 |
| Senior               | Saturday 19 April | Race Session 2              | Warning Signal no earlier than 10:00 |
| Senior               | Sunday 20 April   | Race Session 3              | Warning Signal no earlier than 10:00 |
| Senior               | Sunday 20 April   | Presentation 4-5pm          | ASAP after last race                 |
|                      |                   |                             |                                      |
| WASZP                | Friday 18 April   | Registration                | 9:00 – 10:00                         |
| WASZP                | Friday 18 April   | Competitor's Briefing       | 10:30                                |
| WASZP                | Friday 18 April   | Sprint Series               | Warning Signal no earlier than 13:30 |
| WASZP                | Friday 18 April   | Sprint Series Presentations | ASAP after the last race             |
| WASZP                | Sat 19 April      | Championship Series         | Warning Signal no earlier than 10:00 |
| WASZP                | Sun 20 April      | Championship Series         | Warning Signal no earlier than 10:00 |
| WASZP                | Mon 21 April      | Championship Series         | Warning Signal no earlier than 10:00 |
| WASZP                | Mon 21 April      | Presentation                | ASAP after the last race             |

5.2. The warning signal shown above is for the first race in each session.

5.3. There will be a maximum of 4 “back-to-back” races per session excluding the WASZP sprint series.

5.4. There shall be no warning signal after 1330 hours on the last day of racing.



## 6. FLEETS, DIVISIONS AND CLASS FLAGS

### 6.1.

| Fleet            | Classes   | Course Area | Class / Division Flag |
|------------------|---|-------------|-----------------------|
| Open Division(s) | A Class, Nacra, ILCA 7, ILCA 6,<br>ILCA 4,<br>Tasar, 29er, Flying 11, Wing<br>Foiler, etc | Alpha       | Refer Appendix A      |
| Foiling Classes  | Waszp   | Bravo       | Refer Appendix B      |
| Junior Fleet     | Sabot 1 Up, Sabot 2 Up, Optimist,<br>O'pen Skiff  | Charlie     | Refer Appendix C      |
| Green Fleet      | Optimist Green, Opti Tacker,<br>O'pen Skiff Green, Sabot                                  | Delta       | Refer Appendix D      |

6.2. Fleets may be split or combined at the discretion of the Race Committee. Details will be posted on the official notice board and provided at the competitor's briefing on Saturday morning.

6.3. All courses will be set on Pioneer Bay as described in Clause 20 of these sailing instructions.

## 7. COURSES

7.1. Courses will be as described in the relevant appendix

7.1.1. The courses to be sailed are shown in the relevant Appendix (A, B, C or D)

7.1.2. The Course number to be sailed will be displayed on a board on the back of the course area start boat no later than the warning signal.

## 8. MARKS

Marks will be as described in the relevant appendix

## 9. THE START

9.1. The starting sequence will be as described in the relevant appendix

9.2. The starting line will be between a staff displaying an orange flag on the committee vessel and the PORT end starting mark.

9.3. Boats whose warning signal has not been made shall avoid the starting area.

9.4. A boat starting later than 5 minutes after her starting signal will be scored DNS without a hearing.

This changes rules A4 and A5.

## 10. CHANGE OF THE NEXT LEG OF THE COURSE

To change the next leg of the course, the race committee will lay a new mark (or move the finishing line) and remove the original mark as soon as practicable. When in a subsequent change a new mark is replaced, it will be replaced by an original mark.

## 11. THE FINISH

- 11.1. Marks will be as described in the relevant appendix.
- 11.2. The finishing line will be between a staff displaying a Blue flag on the committee vessel and the STARBOARD end finishing mark.
- 11.3. When a subsequent race is to be sailed, the race committee vessel will display Code Flag "AP" while on station at the finish.

## 12. PENALTIES

Rule 44.1 is changed so that the Two-Turn penalty is replaced by the One-Turn penalty for all classes.

## 13. TIME LIMITS AND TARGET TIMES

- 13.1. Time limits and target times will be as described in the relevant appendix
- 13.2. Failure to meet the target time is not grounds for redress

## 14. PROTESTS AND REQUESTS FOR REDRESS

- 14.1. Protest forms are available at the regatta office, located downstairs at WSC.  
Protests shall be delivered there within the protest time limit.
- 14.2. For each fleet, the protest time limit is 60 minutes after the last boat in that fleet has finished the last race of the racing session. For race session 5 a protest time limit of 30 minutes shall apply.
- 14.3. Notices will be posted within 30 minutes of the protest time limit to inform competitors of hearings to which they are parties or named as witnesses. Hearings will be held as soon as possible after all concerned parties are notified.
- 14.4. Notices of protests by the race committee will be posted to inform boats under rule 61.1(b).
- 14.5. Appendix T (arbitration) may apply prior to a hearing.

## 15. SCORING

- 15.1. Races will be scored in accordance with the requirements of individual sub-series (Sail Airlie, NQ Laser Championship, Sabot Traveller Series).
- 15.2. A maximum of 4 per races per session may be sailed, with 3 races required to constitute a series.
- 15.3. Where fewer than 5 races are completed, a boat's series score will be the total of her race scores.
- 15.4. Where from 5 to 7 races are completed, a boat's series score will be the total of her race scores excluding her worst score.
- 15.5. Where 8 or more races are completed, a boat's series score will be the total of her race scores excluding her two worst scores.



## 16. SAFETY REGULATIONS

### All Classes

- 16.1. Sign on and Sign off sheets will be provided for each morning and afternoon session of racing. Skippers failing to sign on before each session or off after each session within the protest time limit will be scored DNF.
- 16.2. A boat that retires from a race shall notify the race committee as soon as possible.

## 17. PRIZES

| Class / Division  | Regatta Prizes   | Other Prizes  |
|-------------------|--|---|
| Green Fleet       | 1 <sup>st</sup> , 2 <sup>nd</sup> , 3 <sup>rd</sup> Overall                | Participation medals, Encouragement awards                |
| Junior Fleet      | 1 <sup>st</sup> , 2 <sup>nd</sup> , 3 <sup>rd</sup> Overall                | Line Honours for single class (subject to entries)        |
| Mixed Mono Fleet  | 1 <sup>st</sup> , 2 <sup>nd</sup> , 3 <sup>rd</sup> Overall                | Line Honours for single class (subject to entries)        |
| Mixed Multi Fleet | 1 <sup>st</sup> , 2 <sup>nd</sup> , 3 <sup>rd</sup> Overall                | Line Honours for single class (subject to entries)        |
| ILCA              | 1 <sup>st</sup> , 2 <sup>nd</sup> , 3 <sup>rd</sup> Overall for each fleet | North Queensland Laser Championship Trophy for each fleet |
| Waszp             | 1 <sup>st</sup> , 2 <sup>nd</sup> , 3 <sup>rd</sup> Overall                |   |
| Wing Foiler       | 1 <sup>st</sup> , 2 <sup>nd</sup> , 3 <sup>rd</sup> Overall                |   |

- 17.1. Additional prizes may be awarded at the discretion of the race committee

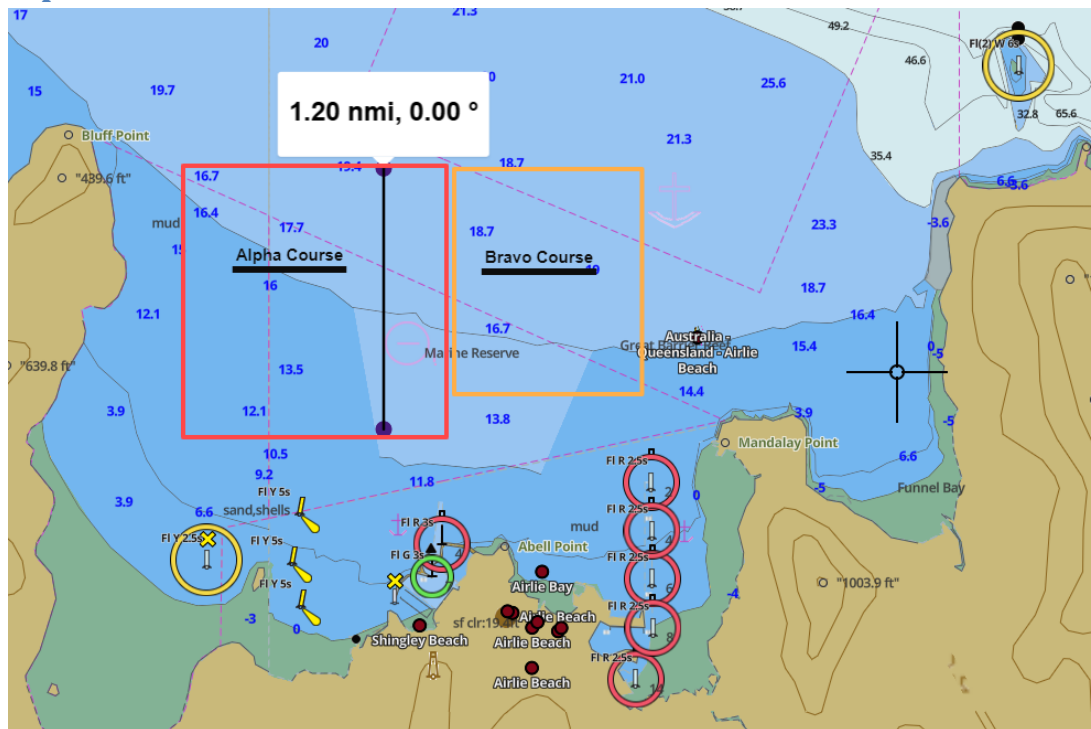
## 18. DISCLAIMER OF LIABILITY

Competitors participate in the regatta entirely at their own risk. See rule 4, Decision to Race. The organizing authority will not accept any liability for material damage or personal injury or death sustained in conjunction with or prior to, during, or after the regatta.

## 19. INSURANCE

Each participating boat shall be insured with valid third-party liability insurance with a minimum cover of \$10,000,000 per event or the equivalent.

## Alpha and Bravo Courses



2025 Sail Airlië Sailing Instructions Final V1.0.docx

## APPENDIX A OPEN DIVISION(S) – MULTIHULL, LASER, MIXED MONOS

### DIVISIONS:

The fleet will be divided into divisions at the discretion of the Race Committee.

There will be 3 divisions of ILCA, ILCA 7, ILCA 6 and ILCA 4. Other classes will be allocated to divisions at the discretion of the Race Committee. Details of divisions and division flags will be advised at the briefing.

Division flags will be:

| Division     | Division Flag                   |
|--------------|---------------------------------|
| Multihull    | Numeral Pendant 2               |
| ILCA 4       | Yellow flag with Laser Insignia |
| ILCA 6       | Green flag with Laser Insignia  |
| ILCA 7       | White flag with Laser Insignia  |
| Monohulls    | Numeral Pendant 1               |
| Wing Foilers | Numeral Pendant 4               |

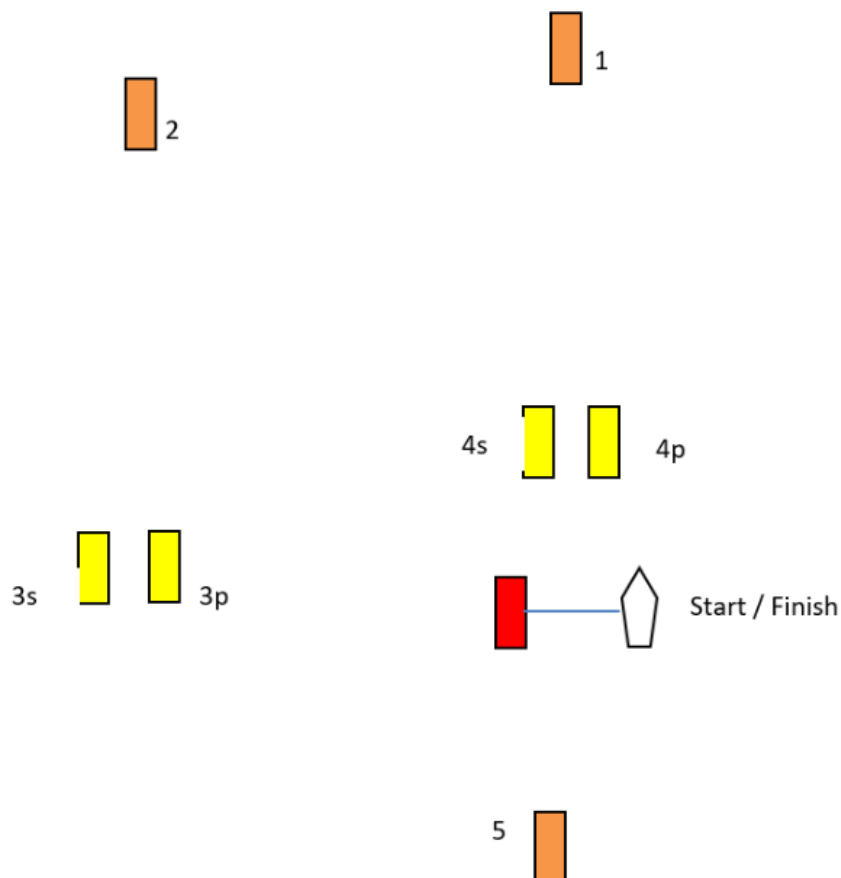
### COURSES:

Courses will be windward / leeward or trapezoid courses with leeward gates

Notes:

- Marks 1, 2 & 5 to be left to PORT
- Marks 3s/3p and 4s/4p are gates
- Boats shall not pass through the start / finish line unless starting or finishing.

| Course No. | Description   |
|------------|---|
| W2         | Start – 1 – 5 – 1 – 5 – Finish                          |
| W3         | Start – 1 – 5 – 1 – 5 – 1 -5 – Finish                   |
| O1         | Start – 1 – 2 – 3p – 5 – Finish                         |
| O2         | Start – 1 – 2 – 3S/3P – 2 – 3p – 5 – Finish             |
| O3         | Start – 1 – 2 – 3S/3P – 2 – 3S/3P 2 – 3p – 5 – Finish   |
| I1         | Start – 1 – 4s/4p – 1 – 2 – 3p – 5 – Finish             |
| I2         | Start – 1 – 4s/4p – 1 – 4s/4p – 1 – 2 – 3p – 5 – Finish |



## MARKS

Mark 1, 2 and 5 will be Orange Inflatable buoys

Marks 3s, 3p, 4s, 4p will be Yellow pencil buoys

The Start / Finish mark will be a Red Inflatable buoy

## THE START

Starts will be in accordance with RRS 26, with the warning signal 5 minutes before the start.

An inner distance mark may be laid near the committee vessel, and boats shall keep this mark to Starboard. Boats failing to comply will be scored Did Not Start without a hearing. This changes RRS A4.1.

## THE FINISH

The finish mark will be a red inflatable buoy at the Port end of the finishing line.

## TIME LIMIT

The time limit for each race will be 60 minutes. Boats who fail to finish within 15 minutes after the first boat in their division sails the course may be scored Did Not Finish without a hearing.



---

# 2024/25 WASZP Queensland Foiling Sprint Championships

18 April 2025

## SAILING INSTRUCTIONS

### 1 ORGANISING AUTHORITY & RULES

- 1.1 The Organising Authority (OA) is as stated in the Notice of Race (NOR).
- 1.2 The rules are stated in the NOR.
- 1.3 Where there is contention between the NoR and the SIs, the SIs take precedence.

### 2 CHANGES TO SAILING INSTRUCTIONS

- 2.1 Changes impacting the racing schedule will be posted by 2000 the day before they take effect.
- 2.2 Any other changes will be posted 60 minutes before they take effect.

### 3 REPLACEMENT OF CREW OR EQUIPMENT

- 3.1 [DP] Substitution of competitors is not allowed.
- 3.2 [DP] Competitors attention is drawn to Class Rule D.3.5.

### 4 SIGNALS MADE ASHORE

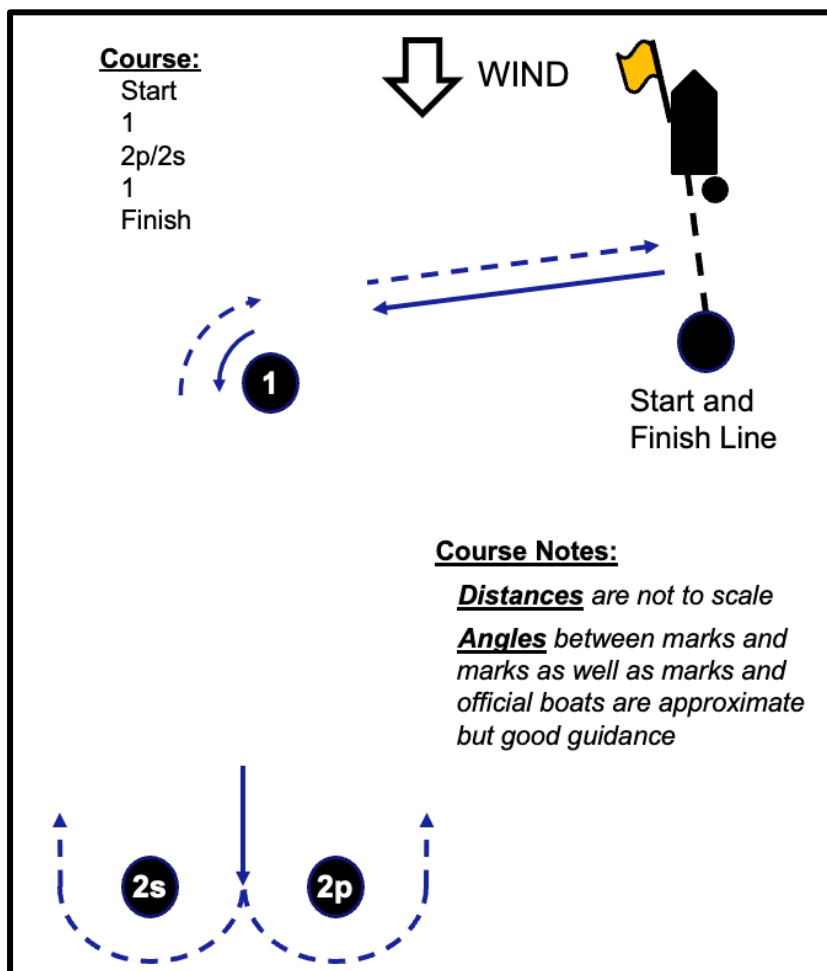
- 4.1 Signals made ashore will be displayed from the Whitsunday Sailing Club flagpole off the balcony
- 4.2 Race Signal AP is changed so that when flag AP is displayed ashore, '1 minute' is replaced with 'not less than 15 minutes'.

### 5 FORMAT AND SCHEDULE OF RACES

- 5.1 Racing will be in single fleet.
- 5.2 A maximum of 9 races will be sailed for the championship.

### 6 COURSE AND MARKS

- 6.1 Course map





6.2 Marks are inflatable with colours as follows:

| Mark   | Start         | 1      | 2s & 2P | Finish        |
|--------|---------------|--------|---------|---------------|
| Colour | Black & White | Yellow | Pink    | Black & White |

6.3 The course will not be changed during a race.

## 7 THE START

7.1 To alert boats that a race or sequence of races will begin soon, the orange starting line flag will be displayed with one sound approximately one minute before a warning signal is made.

7.2 The class flag will be a yellow flag with the WASZP class insignia.

7.3 All races will be started using RRS 26, modified as follows:

| Signal      | Flag Movement                | Sound Signal | Minutes |
|-------------|------------------------------|--------------|---------|
| Warning     | Class Flag displayed         | 1            | 3       |
| Preparatory | P, U or Black Flag displayed | 1            | 2       |
| One-minute  | Preparatory Flag removed     | 1 long       | 1       |
| Starting    | Class Flag removed           | 1            | 0       |

7.4 The Start and Finish Line is between the staff displaying the orange flag on the signal vessel at the starboard end and the Start Mark.

7.5 A boat that does not start within three minutes after her starting signal will be scored DNS without a hearing. This changes RRS A5.1 and A5.2.

## 8 OCS PENALTY

8.1 OCS whilst attempting to start:

8.1.1 Competitors OCS shall drop off the foil completely (while continuing in the direction of Mark 1) and reinitiate foiling before continuing to race behind the middle of the fleet (i.e. half those starting that race) (changes RRS 28 and 29).

8.1.2 OCS penalties must be served before getting approximately half way to Mark 1.

8.1.3 The Race Committee may further penalise a competitor who has gained an advantage by pointing a red flag at them with a sound signal indicating the competitor should take a further "off the foil" penalty. If this is not taken, the competitor will be scored OCS.

## 9 FINISH & FINISHING WINDOW

- 9.1 As the first boat crosses the finish line, the Finishing Window opens. Around the same time the signal vessel will display a chequered Finish flag.
- 9.2 The Finishing Window remains open for 5 minutes or until the last boat has finished. The closing of the Finishing Window will be indicated by dropping of the chequered Finish Flag.
- 9.2.1 While the Finishing Window is open, competitors will be scored in their finishing order.
- 9.2.2 At the time the Finish Window closes, any competitor who has not finished may receive a place allocated by the race committee (reflecting the competitor's progress around the course).
- 9.3 [DP] Boats which have finished (or otherwise no longer competing) shall clear the course and Finish area and shall not cross the Finish line while the Finishing Window is open.

## 10 TIME LIMITS AND TARGET TIMES

### 10.1

| Target Time | Mark 1 Time Limit | Race Time Limit<br>(see RRS 35) | Finishing Window |
|-------------|-------------------|---------------------------------|------------------|
| 5 minutes   | 2 minutes         | 10 minutes                      | 5 minutes        |

- 10.2 If no boat has passed the first mark within the Mark 1 Time Limit, the race will be abandoned.
- 10.3 If no boat Finishes within the Race Time Limit, the race will be abandoned.
- 10.4 Operation of the Finishing Window is set out in SI 9.
- 10.5 Failure to meet the Target Time will not be grounds for redress. This changes RRS 62.1(a).

## 11 SCORING

- 11.1 Two foiling races are required to be completed to constitute a series.
- 11.2 A boat's series score will be the total of her race scores discarding her worst scores based on the number of races completed with reference to the following table:

| Races completed | 2 - 3 | 4 - 6 | 7 - 9 |
|-----------------|-------|-------|-------|
| Discards        | 0     | 1     | 2     |

- 11.3 Competitors may submit scoring enquiries at the regatta office located under the club

## 12 HEARING REQUESTS

- 12.1 The protest time limit is 40 minutes after the last boat finishes the last race of the day or the race committee signals no more racing today, whichever is later. The time will be posted on the official notice board.

- 12.2 Hearing request forms can be obtained from (and submitted to) the regatta office located under the club
- 12.3 Notices will be posted no later than 20 minutes after the protest time limit to inform competitors of hearings in which they are parties or named as witnesses.

### 13 SAFETY REGULATIONS

- 13.1 [DP] [NP] A boat that retires from a race shall notify the race committee at the first reasonable opportunity.
- 13.2 [DP] [NP] Boats shall sign on before going afloat and sign off at the first reasonable opportunity after returning ashore. Signing sheets will be located under the balcony of the club. Any penalty for a breach of this instruction shall result in a score no worse than the score for disqualification.
- 13.3 A safety boat in close attendance to a craft or competitor in difficulty is an Obstruction.
- 13.4 Boats shall follow the reasonable instructions of safety boats. Failure to do so will be reported to the Race Committee, which may protest the boat. Boats penalised under this instruction may be scored DNE, or such other penalty that the Protest Committee may decide. This changes rule 64.1(a).
- 13.5 Outside help shall be reported to the Protest Committee on a form available from the regatta office located under the club before the protest time limit of that session.

## APPENDIX B2 WASZP STATE CHAMPIONSHIP SERIES



# 24/25 Queensland WASZP State Championships

19-21 April 2025

## SAILING INSTRUCTIONS (SIs)

### 1 RULES AND OA

1.1 See NOR

### 2 CHANGES TO SAILING INSTRUCTIONS

2.1 Changes impacting the racing schedule will be posted by 1900hrs on the day before they take effect. Any other SI changes will be posted 90 minutes before they take effect.

### 3 SIGNALS MADE ASHORE

- 3.1 Signals made ashore will be displayed on the flag mast on the balcony of the WSC.
- 3.2 Race Signal AP is changed so that when flag AP is displayed ashore, the first warning signal shall be not less than 15 minutes from its removal or earlier if the Race Committee reasonably deems that all boats intending to compete are in the course area and ready.

#### 4 **FORMAT & SCHEDULE OF RACES**

- 4.1 Four races are scheduled per day; a maximum of five races may be sailed in a day.
- 4.2 A maximum of 14 races will be sailed for the championship.
- 4.3 As per the Waszp NOR for this event

#### 5 **SCORING**

- 5.1 Three races are required to be completed to constitute a series.
- 5.2 A boat's series score will be the total of her race scores discarding her worst score(s) based on the number of races completed with reference to the following table:

| Races completed | 3 - 4 | 5 - 9 | 10 - 14 |
|-----------------|-------|-------|---------|
| Discards        | 0     | 1     | 2       |

- 5.3 Competitors may submit a scoring enquiry at the regatta office located under the WSC.

#### 6 **THE START**

- 6.1 To alert boats that a race will begin soon, the orange start line flag will be displayed with one sound approximately three minutes before the warning signal.
- 6.2 The courses and marks are set out in the Attachment.
- 6.3 During the start sequence, a numeral pennant indicating the course for the next race will be displayed from the stern of the Signal Vessel.
- 6.4 The class flag will be a gold flag with the class insignia.
- 6.5 The start line is between the staff displaying the orange flag on the Signal Vessel at the starboard end and the Start mark.
- 6.6 All races will be started using RRS 26, modified as follows:

| Signal      | Flag Movement                | Sound Signal | Minutes |
|-------------|------------------------------|--------------|---------|
| Warning     | Class Flag displayed         | 1            | 3       |
| Preparatory | P, U or Black Flag displayed | 1            | 2       |
| One-minute  | Preparatory Flag removed     | 1 long       | 1       |
| Starting    | Class Flag removed           | 1            | 0       |

- 6.7 A boat that does not start within five minutes after her starting signal will be scored DNS without a hearing. This changes RRS A5.1 and A5.2.

#### 7 **FINISH**

- 7.1 The Finish line is between the staff displaying a blue flag on the Signal Vessel and the Finish mark.
- 7.2 Grand Prix Finish
  - i. When the leading boat is in the vicinity of Mark 2p for the final time, the Signal Vessel will display the chequered Finish Flag with a sound signal. The Finishing Window opens when the leading boat crosses the by Finish Line. The Signal Vessel will close the Finishing Window by removing the chequered Finish Flag at the earlier of the end of the finishing window time limit or when the last boat finishes. Boat's attention may be drawn to the state of the Finishing Window by a vessel near Marks 2s/2p unofficially replicating finish flag movements.

- ii. All boats (a) completing a lap before the Finishing Window opens but failing to finish while it is open, or (b) crossing the Finish line while the Finishing Window is open, shall be deemed to have finished irrespective of the number of laps completed. Their race positions will be based on the order they either completed their last lap or crossed the Finish line, with those progressing furthest around course placing ahead. This changes RRS 28.1 and A4.
  - iii. [DP] While the Finishing Window is open, all boats on a downwind leg shall round Mark 2p and sail to the Finish line. A boat approaching Marks 2s/2p while the Finishing Window is open shall not attempt a further lap.
  - iv. If a boat is asked by an official vessel, it shall return to the starting area. Such boats will be scored in their last known position. This changes RRS 28.1, A5.1 and A5.2.
- 7.3 [DP] [NP] After finishing, boats shall continue at least 100m before stopping.
- 7.4 [DP] [NP] After finishing and while the Finishing Window is open, boats should avoid boats racing and shall not sail near the Finish Line.

## 8 SHORTEN COURSE

- 8.1 When the Race Committee shortens the course by displaying flag S as the leader(s) approach the leeward gate (Marks 2p/2s), all boats shall round Mark 2p and proceed to finish at the Finish Line. Changes RRS 32.2(c). SI 7.2 applies.

## 9 TIME LIMITS AND TARGET TIMES

- 9.1 See table below

| Time Aspect    | Mark 1 Time Limit | Target Time | Race Time Limit<br>(see RRS 35) | Finishing Window<br>(from time of 1 <sup>st</sup> Finisher) |
|----------------|-------------------|-------------|---------------------------------|---|
| Time (minutes) | 12                | 20          | 40                              | 10  |

- 9.2 If no boat has passed the first mark within the Mark 1 Time Limit, the race will be abandoned.
- 9.3 Failure to meet the Target Time will not be grounds for redress.
- 9.4 The protest time limit is 60 minutes after the later of; the last boat finishing the last race of the day or no more racing today being signalled. This time will be posted on the official notice board located downstairs below the balcony of the club

## 10 HEARING REQUESTS

- 10.1 Hearing request forms can be submitted by lodging a 'protest hearing request' form via regatta office, located downstairs at WSC, within the protest time limit.
- 10.2 Notices will be posted no later than 30 minutes after the protest time limit to inform competitors of hearings in which they are parties or named as witnesses.

## 11 SAFETY REGULATIONS

- 11.1 [[DP] [NP] A boat that retires from a race shall notify the race committee at the first reasonable opportunity.
- 11.2 [DP] [NP] Boats shall sign on before going afloat and sign off at the first reasonable opportunity after returning ashore. Signing sheets will be located downstairs at WSC. Any penalty for a breach of this instruction shall result in a score no worse than the score for disqualification.
- 11.3 A safety boat in close attendance to a craft or competitor in difficulty is an Obstruction.
- 11.4 Boats shall follow the reasonable instructions of safety boats. Failure to do so will be reported to the Race Committee, which may protest the boat. Boats penalised under this



instruction may be scored DNE, or such other penalty that the Protest Committee may decide. This changes rule 64.1(a).

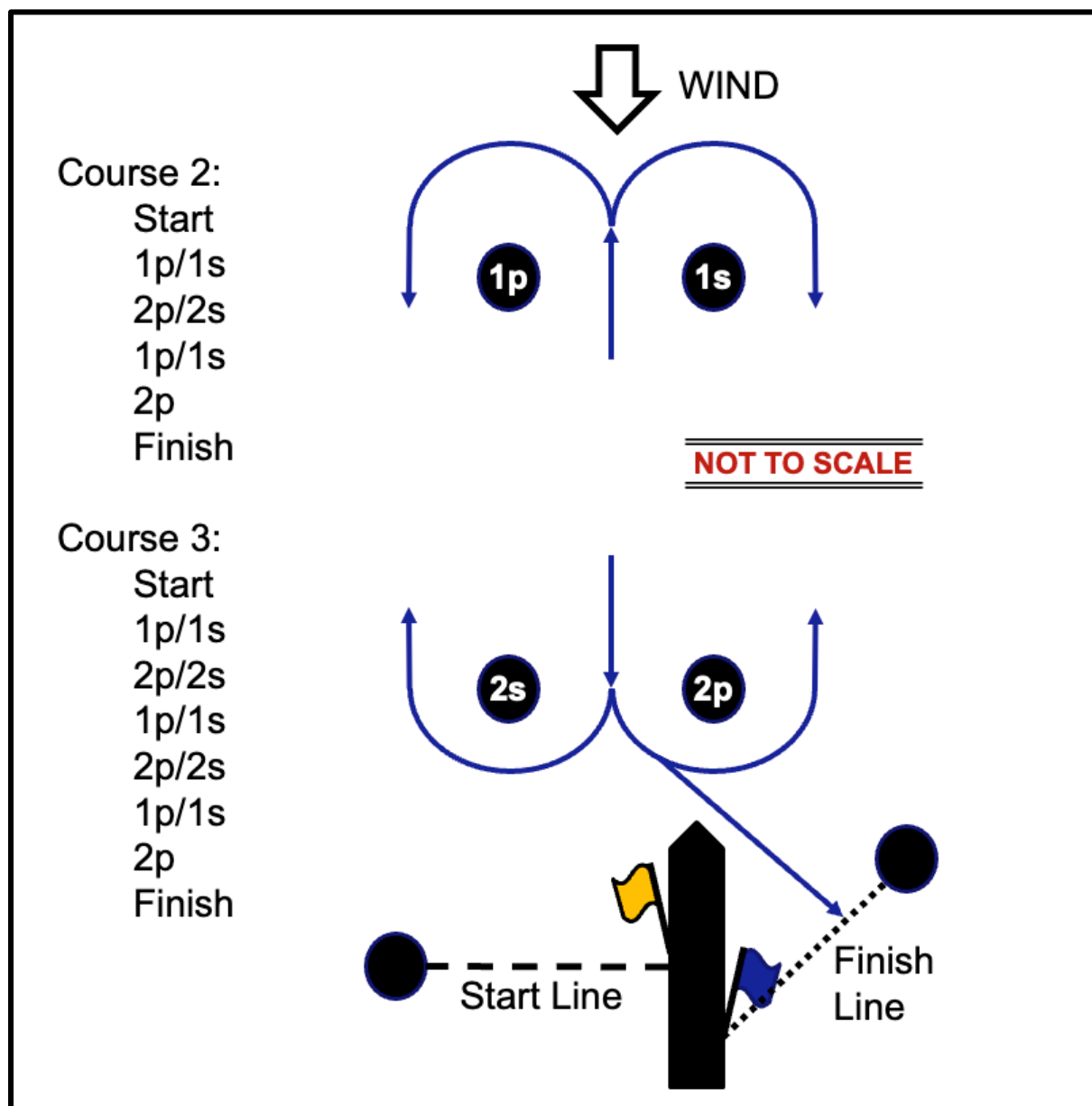
- 11.5 Outside help shall be reported to the Protest Committee on a form available from the regatta office located under the WSC, before the protest time limit of that session.

## 12 EQUIPMENT AND MEASUREMENT CHECKS

- 12.1 A boat or equipment may be inspected at any time for compliance with the rules.
- 12.2 [DP][NP] The technical or race committee may instruct a competitor to keep their boat fully rigged when they return to shore until released by the head of the technical committee. Competitors shall comply with such instructions.

## ATTACHMENT; COURSES & MARKS

1. The course configuration is as follows:



2. Marks are inflatable with colours as follows:

| Mark   | Start Pin | 1p and 1s | 2p and 2s | Finish    |
|--------|-----------|-----------|-----------|-----------|
| Colour | Red       | Pink      | Yellow    | Checkered |

## APPENDIX C – JUNIOR FLEET

### DIVISIONS:

There will be 3 divisions.

Division flags will be:

| Division    | Division Flag                   |
|-------------|---------------------------------|
| O'pen Skiff | White Flag with Open Skiff Logo |
| Sabot       | White Flag with Sabot Logo      |
| Optimist    | Yellow Flag with Optimist Logo  |



| Course | Description                            |
|--------|--|
| 1      | Start – A – B – C – A – C – A – Finish |
| 2      | Start – A – B – C – A – Finish         |

## **COURSES:**

Courses will be Triangular or Windward / Leeward courses.

Notes:

- All marks to be left to PORT
- If code flag S is displayed prior to or with the warning signal, boats will sail Course 2 as described below. If code flag S is NOT displayed prior to or with the warning signal, boats will sail Course 1 as described below.

## **MARKS**

Marks A, B & C will be Orange inflatable buoys. The Start / Finish mark will be Yellow inflatable buoy

## **THE START**

Starts will be in accordance with RRS 26, with the warning signal 5 minutes before the start.

An inner distance mark may be laid near the committee vessel, and boats shall keep this mark to Starboard. Boats failing to comply will be scored Did Not Start without a hearing. This changes RRS A4.1.

## **THE FINISH**

The finish mark will be a yellow inflatable buoy at the Starboard end of the finishing line.

## **TIME LIMIT**

The time limit for each race will be 60 minutes. Within each division, boats who fail to finish within 15 minutes after the first boat sails the course may be scored Did Not Finish without a hearing.

## APPENDIX D GREEN FLEET

### NOTE:

There will be a meeting of competitors before going to sea for each racing session.

### Rules:

Optimist Green, Opti Tacker Green, O'pen Skiff Green and Sabot Green fleets shall be governed by the World Sailing Introductory Rules of Racing.

### DIVISIONS:

The fleet may be divided into divisions.

### COURSES:

Courses will be described at an information session before each session of races.

### MARKS:

All marks will be yellow or red spheres as described at the information session before racing.

### THE START

The starting sequence will be as follows:

|                 |                |                           |                |
|-----------------|----------------|---------------------------|----------------|
| 3 Minutes to go |                | Three (3) Flags displayed | 1 Sound Signal |
| 2 Minutes to go | 1 flag removed | Two (2) flags displayed   | 1 Sound Signal |
| 1 Minute to go  | 1 flag removed | One (1) flag displayed    | 1 Sound Signal |
| Start           | 1 Flag removed | Nothing displayed         | 1 Sound Signal |

This changes Rule 26.

The start is between the race committee boat and a nearby buoy.

### THE FINISH

The finish is between the race committee boat and a nearby buoy

### TIME LIMIT

The time limit will be at the discretion of the race committee. Every effort will be made to ensure boats are scored in each race.