

# 2020 WSC AROUND WHITSUNDAYS RACE SUPPLEMENTARY SAILING INSTRUCTIONS

(TO BE READ IN CONJUNCTION WITH 2020 SAILING INSTRUCTIONS)

SPONSORED BY GREAT NORTHERN BREWING COMPANY

## 1 RULES

- 1.1. The Organising Authority is Whitsunday Sailing Club Limited.
- 1.2. The race will be governed by the current versions of:
  - 1.2.1. The rules as defined in the Racing Rules of Sailing (RRS) of World Sailing.
  - 1.2.2. The prescriptions of Australian Sailing (AS).
  - 1.2.3. Australian Sailing Special Regulations (Part 1 for Racing Boats).
- 1.3. Between the hours of sunset and sunrise, as defined in the Queensland tide tables, part 2 of the RRS will be replaced by the International Rules for the Prevention of Collision at Sea.
- 1.4. Competitors are reminded of the provisions of Fundamental Rule 4 - DECISION TO RACE which states “The responsibility for a boat’s decision to participate in a race or to continue racing is hers alone”.

## 2 CATEGORY OF EVENTS

- 2.1. The race is classified as Category 5 races. Any boat racing after official sunset shall comply with Category 5N.

## 3 NOTICES TO COMPETITORS

Notices to competitors will be posted on the official noticeboard located in the Clubhouse.

## 4 CHANGES TO SAILING INSTRUCTIONS

Changes to the sailing instructions will be posted not less than two hours before taking effect, except that any change in the schedule of races will be posted by 1900 hours on the day before it will take effect.

## 5 SIGNALS MADE ASHORE

Signals made ashore will be displayed on the flagstaff located on the balcony of the Sailing Club. Repeats of these signals may be displayed on the race committee boat.

## 6 SCHEDULE OF RACES

The warning signal for all classes will be displayed no earlier than 0855 Hrs on Saturday 11 July 2020

## 7 ENTRIES

- 7.1. All boats competing shall complete the on line entry form at:  
<https://www.revolutionise.com.au/whitsundaysc/events/>.

- 7.2. Boats shall, prior to their warning signal, confirm to the Race Committee of their intention to race, together with the number of people on board (POB).
- 7.3. To be eligible to enter a race a boat shall lodge or have held on file at WSC the following documentation
  - 7.3.1. A completed AS Special Regulations compliance form appropriate to Category 5 for daytime, 5N for racing after sunset; and
  - 7.3.2. A copy of current insurance policy endorsed for racing and having a minimum Public Liability cover of \$10 million; and
  - 7.3.3. For any crew under the age of 18 years, written permission from their parent or guardian;
- 7.4. A boat failing to comply with SI 7.2 or SI 7.3 above may be scored DNC without a hearing. This changes RRS A5.
- 7.5. The Race Committee will post a list of handicaps, prior to the start of a race.

## 8 DIVISIONS

There may be three divisions (1, 2, and 3) dependent upon the number of entries

<b>DIVISION</b>	<b>FLAG</b>	<b>CLASS</b>
<b>1</b>	White Flag	Multihulls
<b>2</b>	Purple Flag	Faster Monohulls
<b>3</b>	Pink Flag	Slower Monohulls
<b>Combined</b>	Pink/Black	Combined Division

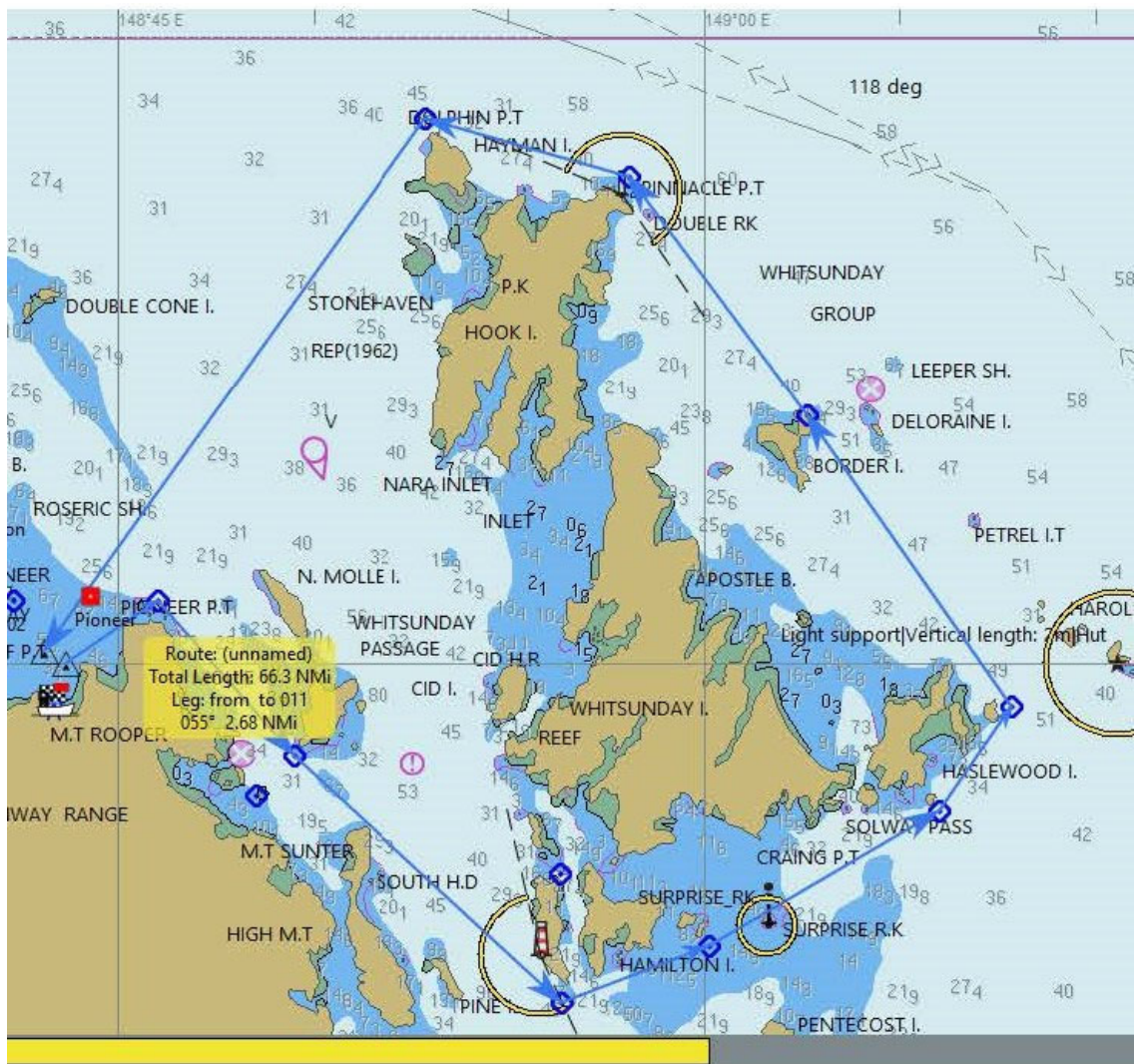
## 9 RACING AREA

Racing will be conducted within the areas defined on charts AUS 825 & 252.

## 10 COURSES

The course for all divisions will be:

Start, Dent Island (port), Workington Island (port), Border Island (port), Hayman Island (port), finish.



## 11 MARKS

The start and finish marks will be an orange inflatable buoy located to seaward of Whitsunday Sailing Club.

## 12 THE START

- 12.1. The start sequence will be conducted in accordance with RRS 26.
- 12.2. The Starting line will be an imaginary line between the Flag mast on the committee vessel displaying a club burgee and a starting mark set at approximately 90 degrees to the direction of the first mark.
- 12.3. The starting mark will be an ORANGE inflatable cylindrical buoy.
- 12.4. The committee vessel will be located at the starboard end of the starting line.

## 13 THE FINISH

- 13.1. All boats will take their own finishing time and advise the race committee by text message to 0429 584 787.
- 13.2. The finish will be between a committee vessel on the STARBOARD end and the nearby finish mark. The committee vessel will display a club burgee and a blue

“On station” flag. Should the race committee boat not be present, the finish will be between the Whitsunday Sailing Club flag mast and the finishing mark.

- 13.3. The finish mark will be in the same location as the starting mark.
- 13.4. Between official sunset and sunrise, the committee vessel (if present) may display a blue flashing light.

## **14 TIME LIMIT**

- 14.1. There is no time limit.

## **15 RADIO COMMUNICATIONS**

- 15.1. For races outside the bay in progress after 1730 hours, a radio schedule will be conducted at 1735 hours on VHF Channels 73, 72, 81 and 82, and then at (4) hourly intervals until all boats have finished or returned to port. When called, a boat shall provide its latitude and longitude and any other information requested.
- 15.2. When passing Hayman Island, each boat shall advise the race committee on VHF Channel 73.
- 15.3. In the event of a boat being unable to contact WSC on the stated channels, the boat shall attempt to contact radio relay vessel (Twister) on VHF channel 73.

## **16 PROTESTS**

The protest time limit is 12 noon of the day following the race. This changes RRS 61.3.

## **17 LIABILITY**

Competitors participate in a race entirely at their own risk and are responsible for the seaworthiness of a boat whose entry is accepted and for the sufficiency and adequacy of its equipment. Neither the Whitsunday Sailing Club Ltd, their servants nor volunteers shall accept liability or responsibility whatsoever for death or any personal or material damage sustained by participants before, during or after a race, see RRS 4, Decision to race.

## **18 INCIDENT REPORTS**

A skipper involved in an incident involving significant injury, grounding or collision is required to lodge an incident report with the club and Maritime Safety Queensland.

## **19 RETIREMENTS**

Any boat retiring from a race shall use all available means to promptly advise the WSC race committee of such retirement.